

# Bellevue - Bionnassay glacier trail via the Chalets de l'Are

● **Difficult**

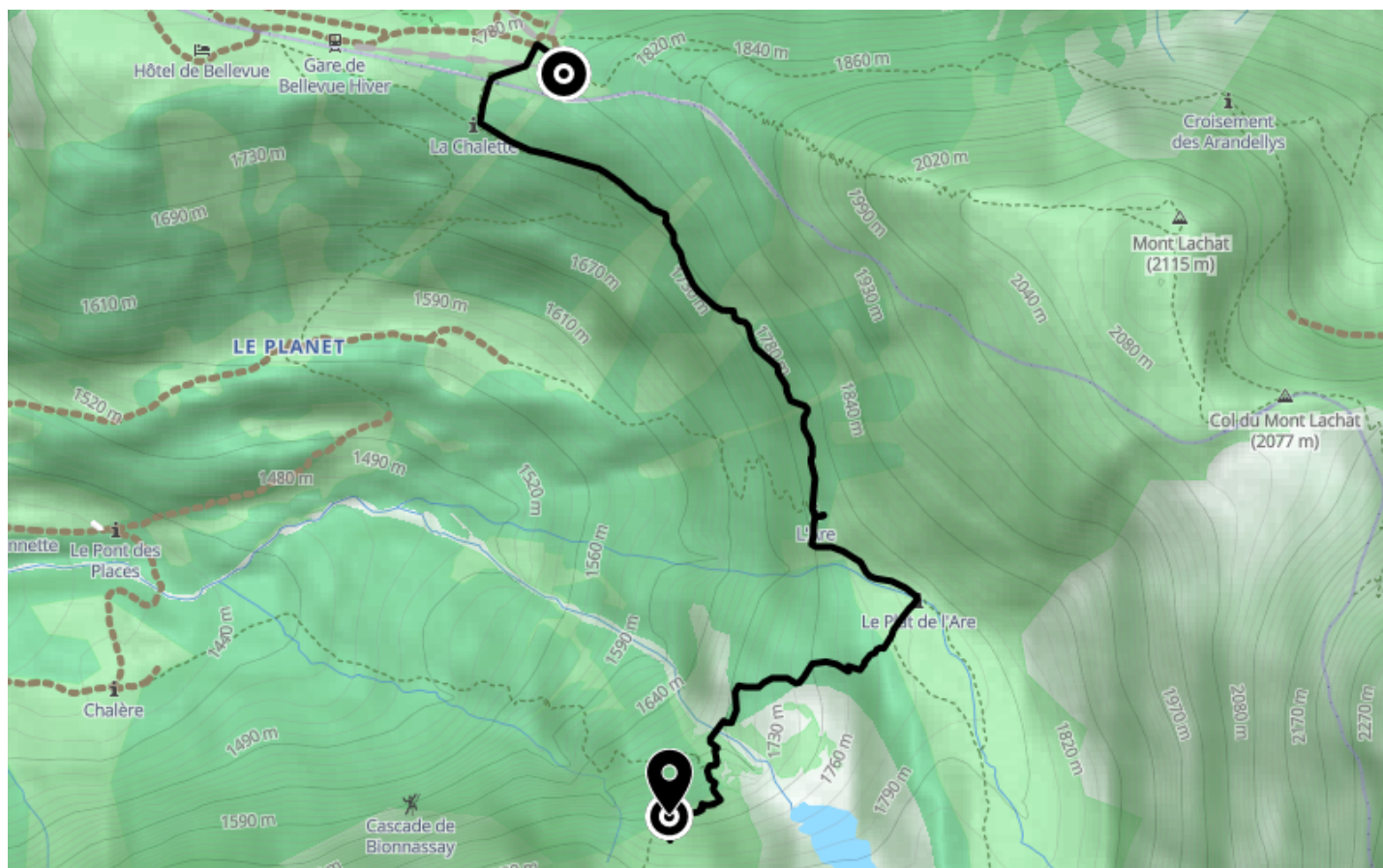
🚶 **Walk**

🕒 **4 h 30 min**

↔️ **2.40 km**

📍 **Départ** Route des Gens  
74170, Saint-Gervais-les-Bains

📍 **Arrivée** Chemin de l'Orme  
74170, Saint-Gervais-les-Bains



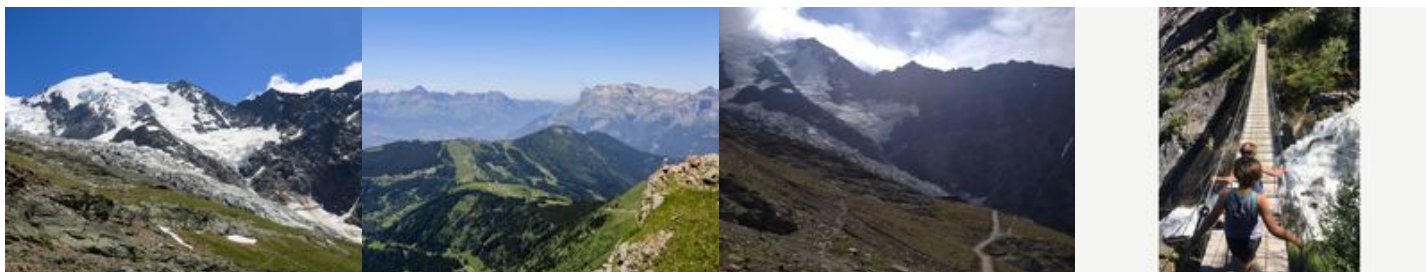
## Descriptif

Start out from the Bellevue cable car station and follow the signs and the gently sloping path to the Chalets de l'Are. Then follow the path along the left-hand side of the glacier. Follow the signs for the Nid d'Aigle. On your right, you will look down over the seracs and crevasses of the glacier in the foreground, with the Col du Tricot in the background. From here, you will enjoy a fine view over the Bionnassay glacier. To go back down, either take the Mont Blanc tram back to Bellevue or head back along the same path.

Level: difficult/athletic - you will approach high mountain conditions. Be warned - this trail will sometimes take you upwards via a series of metal ladders.

More information at the Tourist Office, the High Mountain Office, and in our hiking guide.

Careful: path conditions may change - remember to check the latest information before setting off.



**Office de Tourisme de Chamonix**

85 place du triangle de l'amitié

+33450530024

<https://www.chamonix.com/>



Retrouvez ce parcours et bien d'autres  
sur l'application mobile **Loopi - balades & GPS**

