

Chamonix-Plan de l'Aiguille hiking trail

● **Difficult**

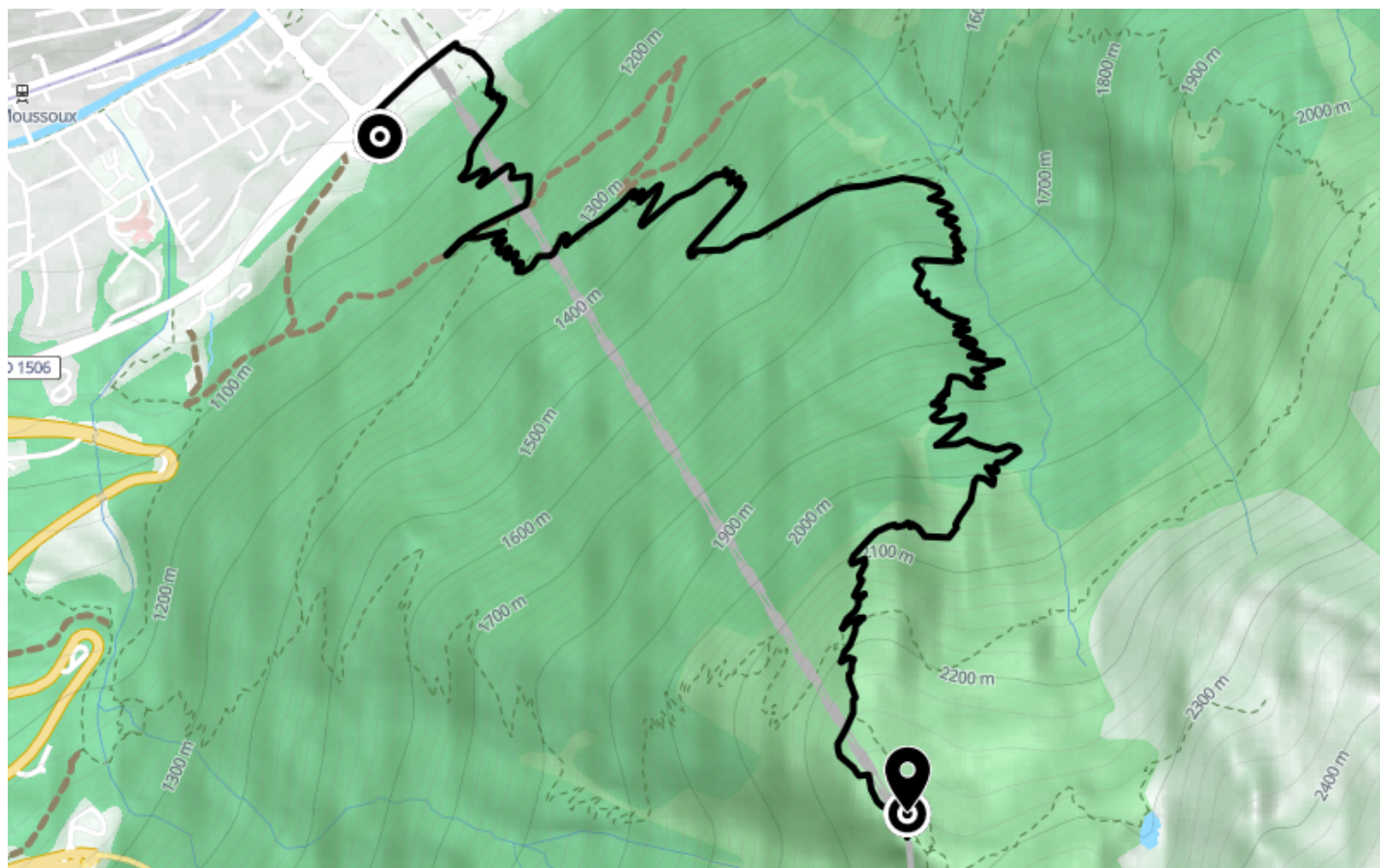
🚶 **Walk**

🕒 **5 h 30 min**

↔️ **14.0 km**

📍 **Départ** Carrefour du Grépon
74400, Chamonix-Mont-Blanc

📍 **Arrivée** Accès Zone de Décollage des
Parapentes
74400, Chamonix-Mont-Blanc



Descriptif

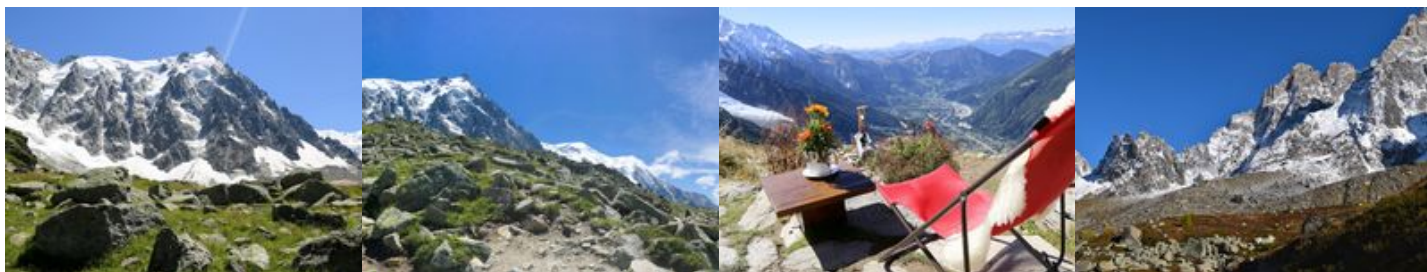
From point I, go to the start by crossing the Grépon parking lot in the direction of the jumping board. Take the path on the right and follow it through the forest or corridor until you reach the forest track coming from Molliasses. Cross it under the cables of the cable car while going up in front of it, then leave on the left the path of the Pré du Rocher. Continue in the forest by the Plan du Trois. Continue above between big boulders until the refuge.

Refreshment bar near the cable car. Private refuge : dormitories - restaurant at the arrival.

Possibility to go back down by cable car. Other departure possible from Les Pèlerins.

This hike allows you to walk to the Grand Balcon Nord and to reach the Montenvers - Mer de Glace site from the Plan de l'Aiguille (about 2h30). From here you can go down to Chamonix with the cramailière train. Return to this itinerary : Le Plan de l'Aiguille - Chamonix : 2 hours

More information available at the Tourist Office or the High Mountain Office and in our trail guide.
Warning: Trail conditions are subject to change, please check before you leave.



Office de Tourisme de Chamonix

85 place du triangle de l'amitié

+33450530024

<https://www.chamonix.com/>



Retrouvez ce parcours et bien d'autres
sur l'application mobile Loopi - balades & GPS

