

Alpage de Loriaz from Le Couteray

● Difficult

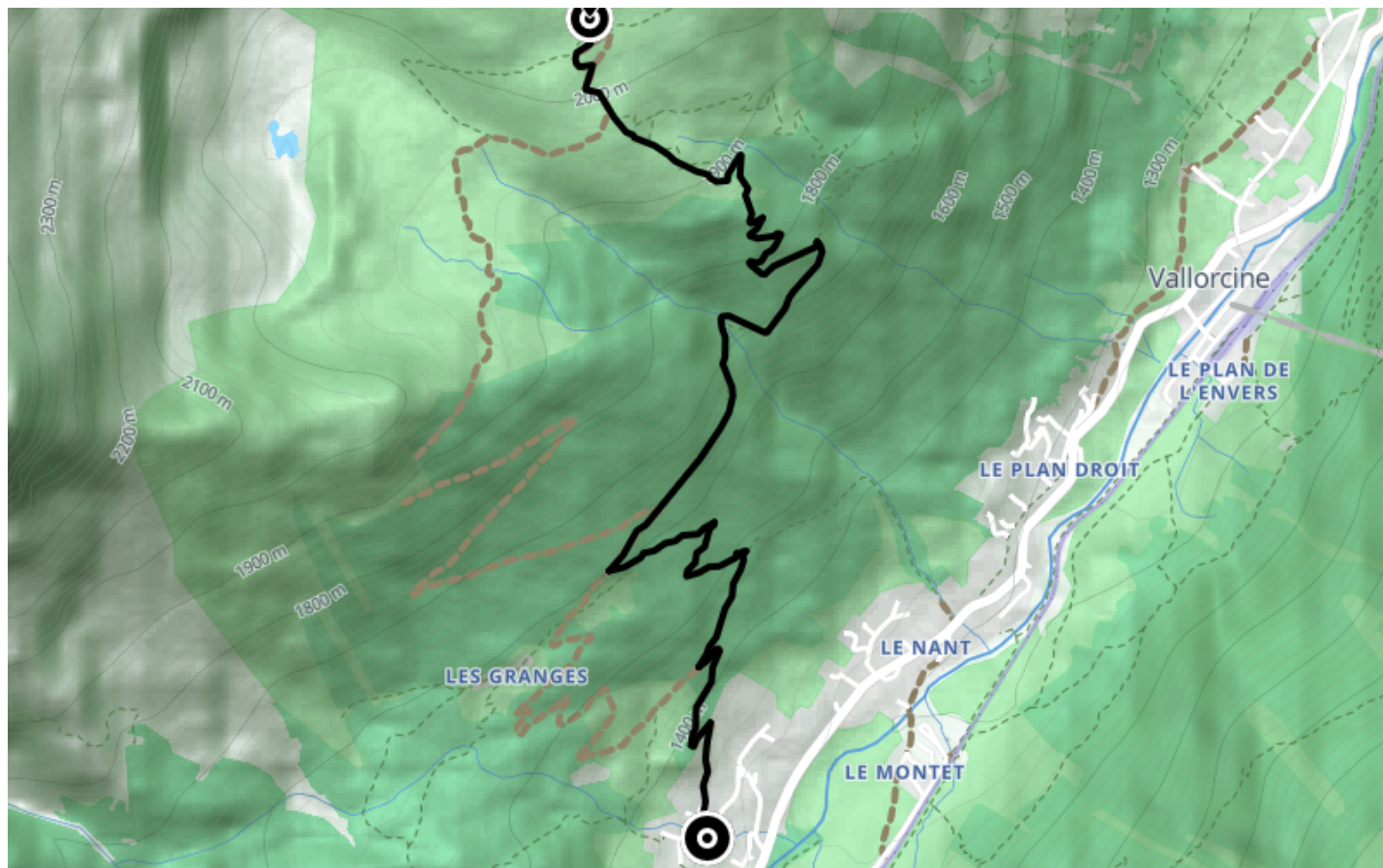
🚶 Walk

🕒 4 h 10 min

↔ 8.20 km

📍 **Départ** Route du Lay
74660, Vallorcine

📍 **Arrivée** Route du Lay
74660, Vallorcine

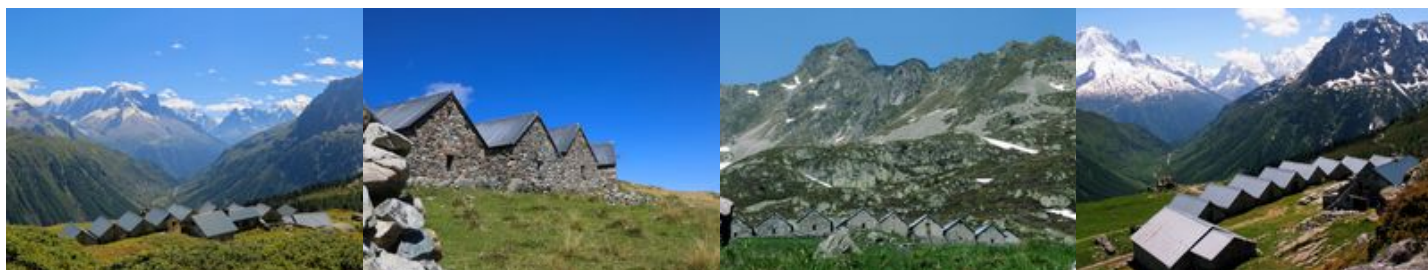


Descriptif

Take the forest track at the top right in the village: follow it for a few hundred metres and after the third bend, take the path that goes up on the right. and after the third bend, use the path that goes up on the right. It is joined by the one coming from the Nant. Continue to find the track that you follow for about 200 m. When you leave it, go right into the forest, cross the Nant de Loriaz (1652 m). Continue by a few hairpin bends to the plateau above the vegetation. At the Croix de Loriaz, we find on the right the path coming from Le Crot and after some efforts, the refuge is reached in the mountain pasture.

Other itineraries are possible from Le Nant, Le Sizeray.

More information is available at the Tourist Office or the Office de Haute-Montagne and in our trail guide. Attention : The conditions of the trails are likely to change, think to inform you before leaving.



Office de Tourisme de Chamonix

85 place du triangle de l'amitié

+33450530024

<https://www.chamonix.com/>



Retrouvez ce parcours et bien d'autres
sur l'application mobile **Loopi - balades & GPS**

