

# Hike to Charousse

● Average

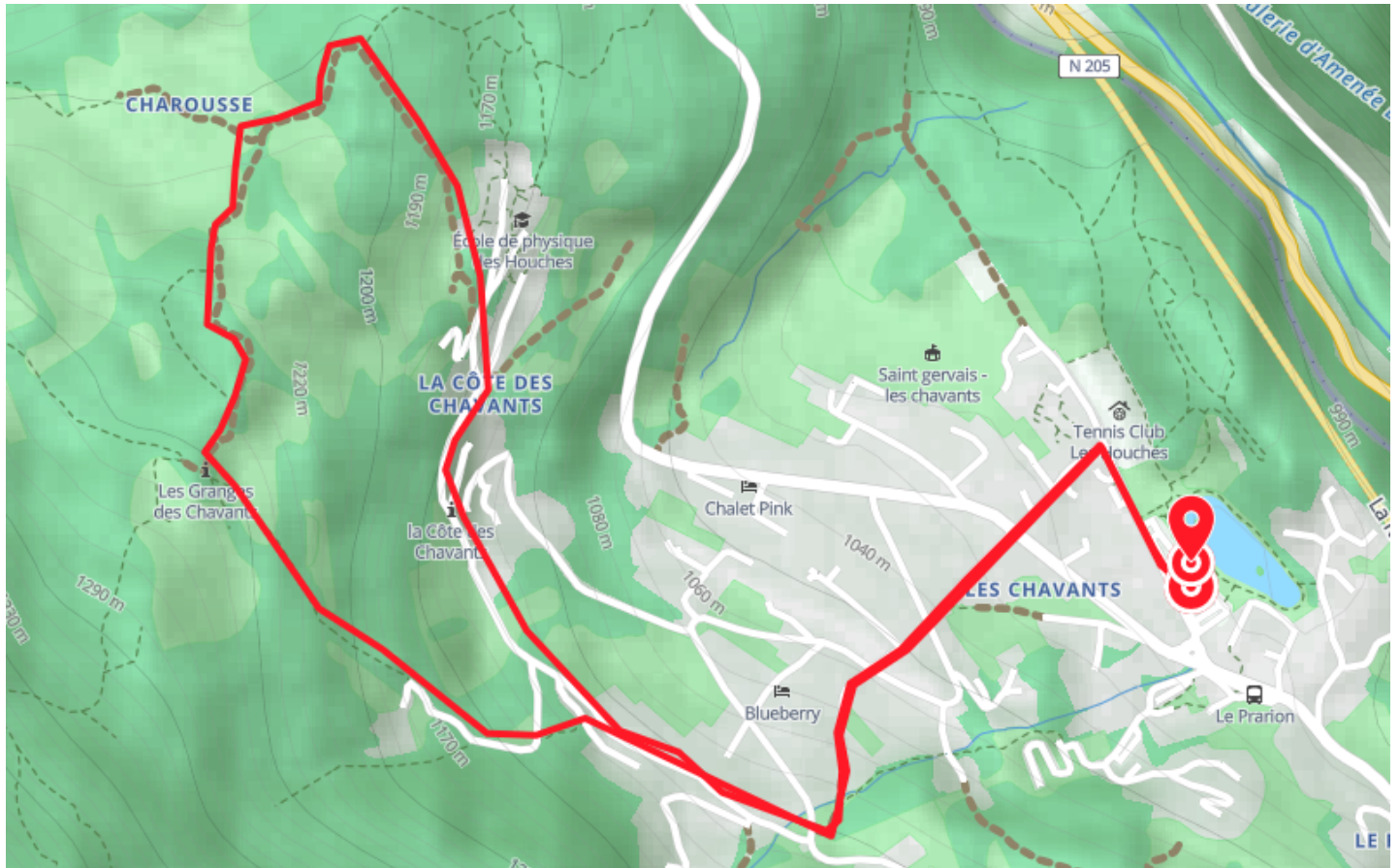
🚶 Walk

🕒 2 h

↔️ 1.80 km

📍 **Départ** 65 Allée des Diligences  
74310, Les Houches

📍 **Arrivée** 65 Allée des Diligences  
74310, Les Houches



## Descriptif

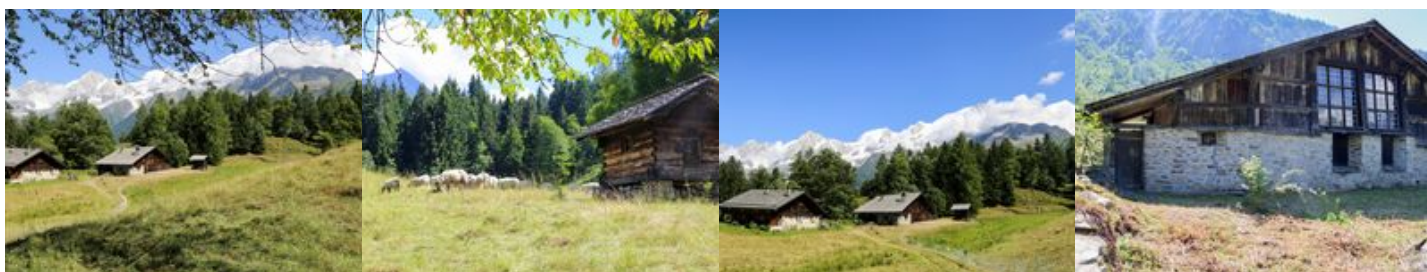
From the Prarion-Les Chavants parking lot, join the municipal day-care center and tennis court building. Turn left up the Route des S'Nailles towards Côte des Chavants. This road passes through the typical hamlets of Les Chavants. Follow the signs for the Ecole de Physique, then fork left towards the Charousse mountain pasture.

The Charousse mountain pasture, a testament to pastoral history and mountain architecture. Situated on the impressive glacial polis that form the bedrock of the Mont-Blanc Massif and the Aiguilles Rouges, the Charousse mountain pasture is a magnificent place with an exceptional view of the Mont-Blanc Massif.

In order to preserve this area, please stay on the path and do not cross the fences. The hamlet is made up of beautiful, well-preserved traditional farmhouses. This alpine pasture was a summer transition zone for herds moving out to pasture.

A little historical focus:

In 1926, architect Albert Laprade fell under the spell of this mountain pasture. He acquired one of the chalets and, above all, a large number of traditional objects and furnishings, which he bequeathed to the commune of Les Houches. This collection can be seen at the mountain museum in Les Houches.



**Office de Tourisme de Chamonix**

85 place du triangle de l'amitié

+33450530024

<https://www.chamonix.com/>



Retrouvez ce parcours et bien d'autres  
sur l'application mobile **Loopi - balades & GPS**

