

Grand Balcon Nord: Bellevue to Prarion

● Average

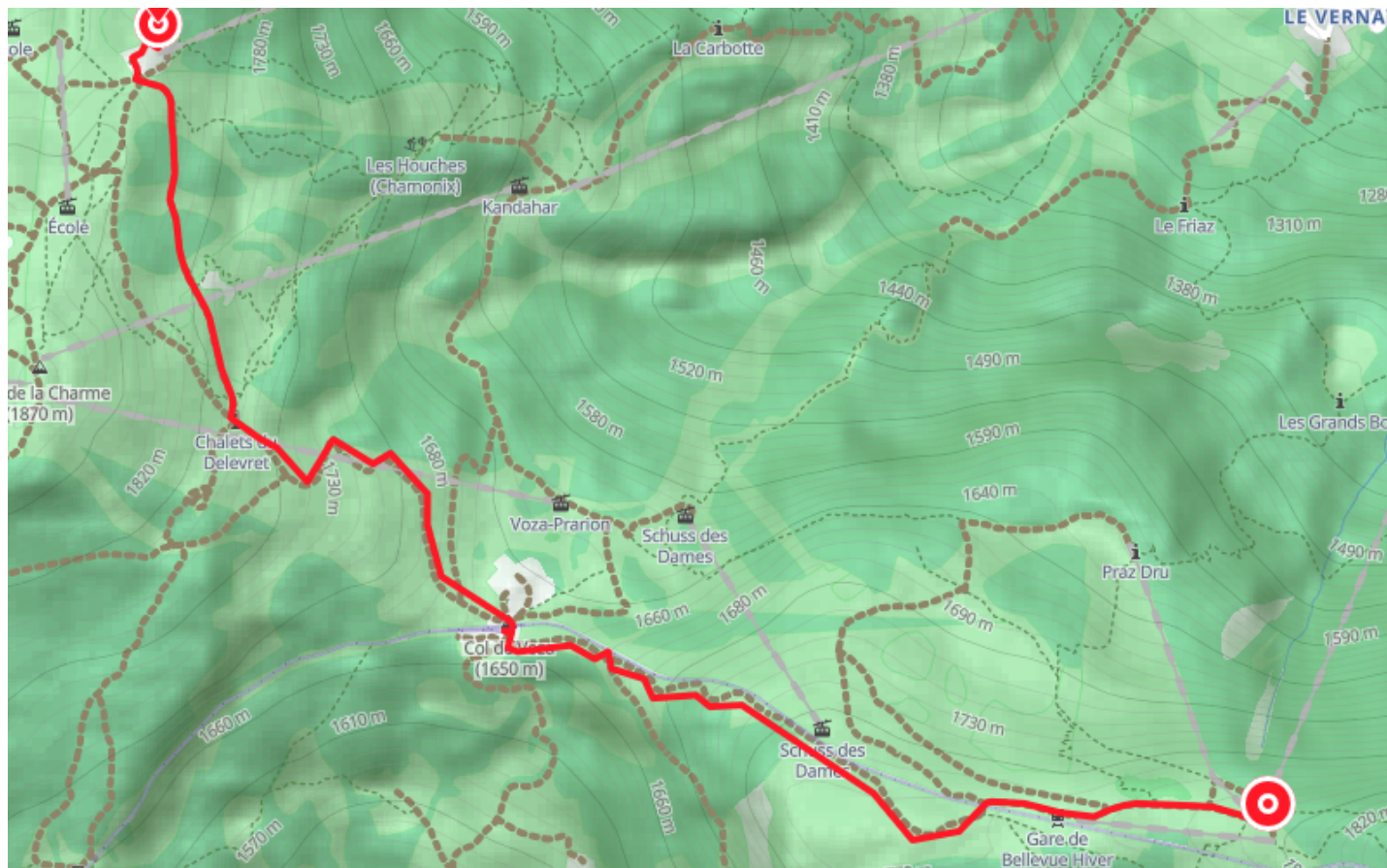
🚶 Walk

🕒 2 h

↔ 3.30 km

📍 **Départ** Route des Gens
74170, Saint-Gervais-les-Bains

📍 **Arrivée** 5971 Route du Prarion
74170, Saint-Gervais-les-Bains

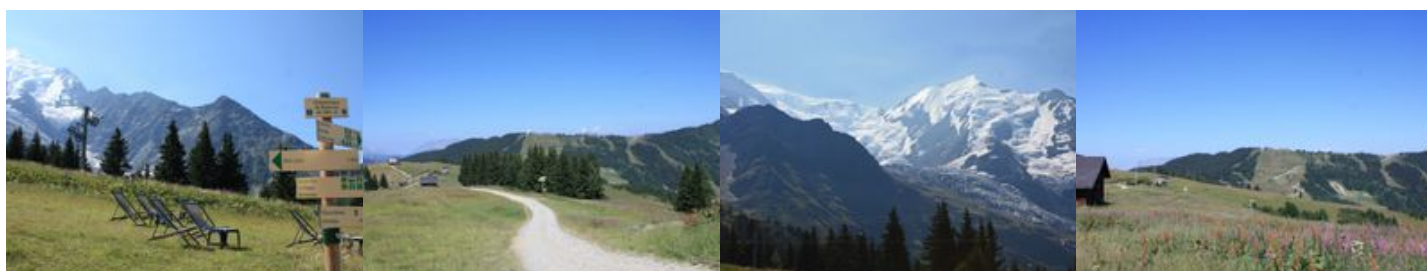


Descriptif

Get off the chairlift and head down on the left below the former Hotel de Bellevue. Views over the Bionnassay and Gouter peaks. Continue alongside the Mont-Blanc tram tracks. Down on the right is an Alpine pasture still used for grazing. Join the Col de Voza (1,653 m). Follow the path on the right leading up to Hotel du Prarion and the LHSG cable car station (1,853 m).

You can also start from Les Houches.

More information at the Tourist Office, the High Mountain Office, and in our hiking guide.
Careful: path conditions may change - remember to check the latest information before setting off.



Office de Tourisme de Chamonix

85 place du triangle de l'amitié

+33450530024

<https://www.chamonix.com/>



Retrouvez ce parcours et bien d'autres
sur l'application mobile **Loopi - balades & GPS**

