

# Hike to the Alpage of Chailloux

● **Difficult**

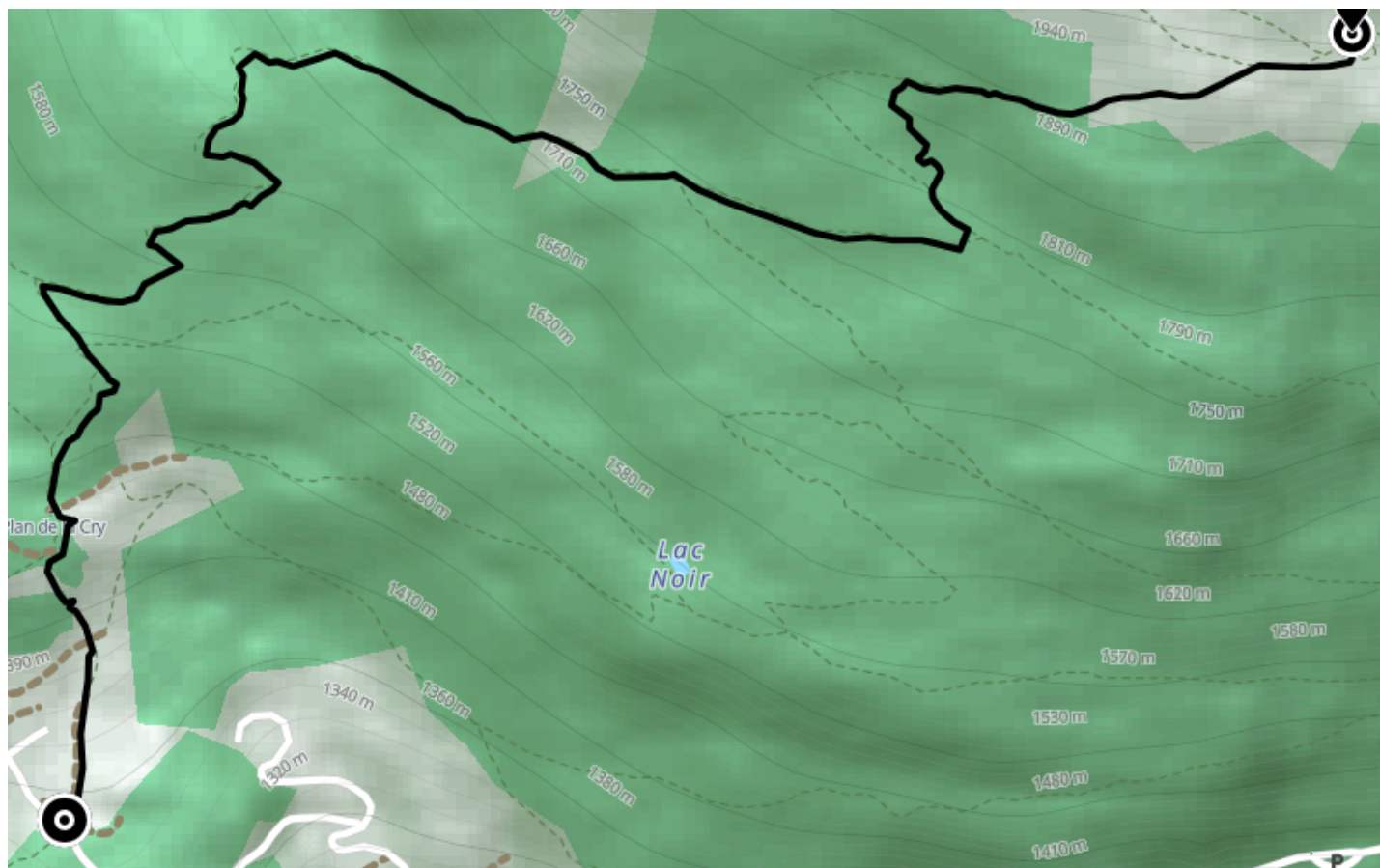
🚶 **Walk**

🕒 **3 h 45 min**

↔️ **6.20 km**

📍 **Départ** 474 Route de la Flatière  
74310, Les Houches

📍 **Arrivée** Sentier « En Forme » (2h) - Zone de  
silence  
74310, Les Houches

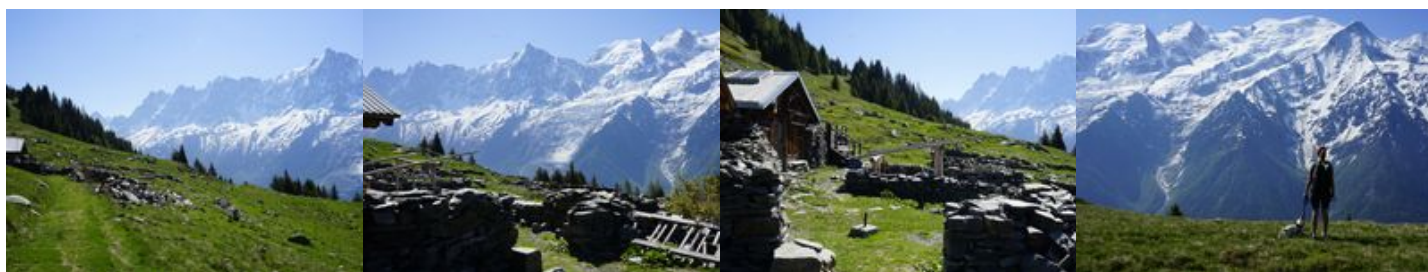


## Descriptif

Departure from the hamlet of Coupeau, join La Flatière, parking possible on the parking lot of Le Betty. On foot, follow the direction of Plan de la Cry. Leave on the right the path leading to the Parc Animalier de Merlet and on the left, the one leading to Pierre Blanche: take the path going up in front of you in the forest by many twists and turns. It crosses clearings, corridors and woods where this path meets the one coming from Merlet. In 2 turns, reach the Alpage de Chailloux (1913m) in 2h10.

Suggestions : From the Alpage de Chailloux possibility to continue to the Aiguillette des Houches.  
Other itineraries are possible from Les Houches, Chamonix, Coupeau...

More information available at the Tourist Office or at the High Mountain Office and in our trail guide.  
Attention : The conditions of the trails are likely to change, think of informing you before leaving.



**Office de Tourisme de Chamonix**

85 place du triangle de l'amitié

+33450530024

<https://www.chamonix.com/>



Retrouvez ce parcours et bien d'autres  
sur l'application mobile **Loopi - balades & GPS**

