

Hike along the Petit Balcon Sud: Merlet-Plan de la Cry

● Average

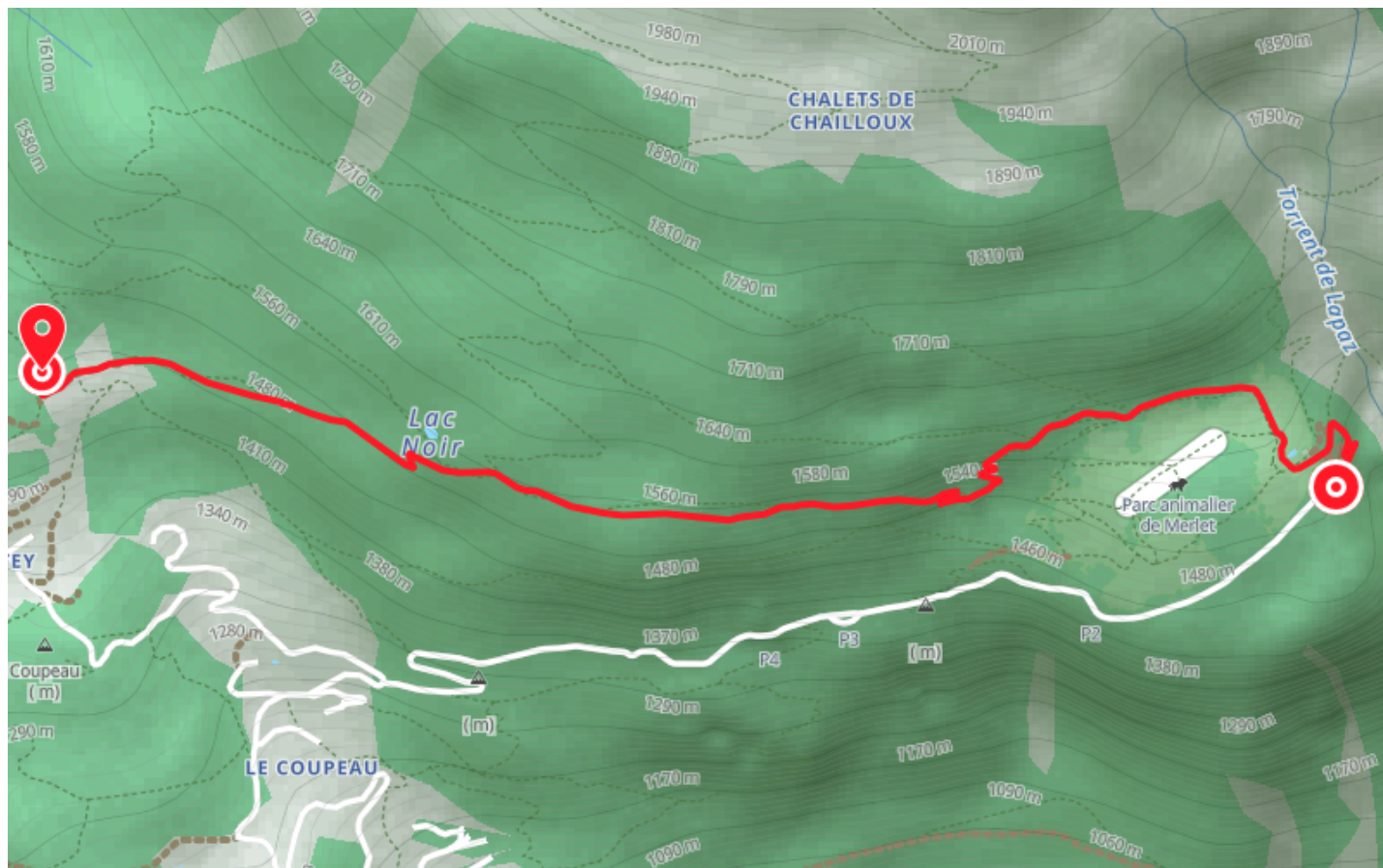
🚶 Walk

🕒 3 h

↔ 6.20 km

📍 **Départ** Sentier « Tranquille » (1h)
74310, Les Houches

📍 **Arrivée** 380 Chemin du Plan de la Cry
74310, Les Houches



Descriptif

A hike that mainly goes through the woods. A trail that offers sweeping views of the Mont Blanc Massif.

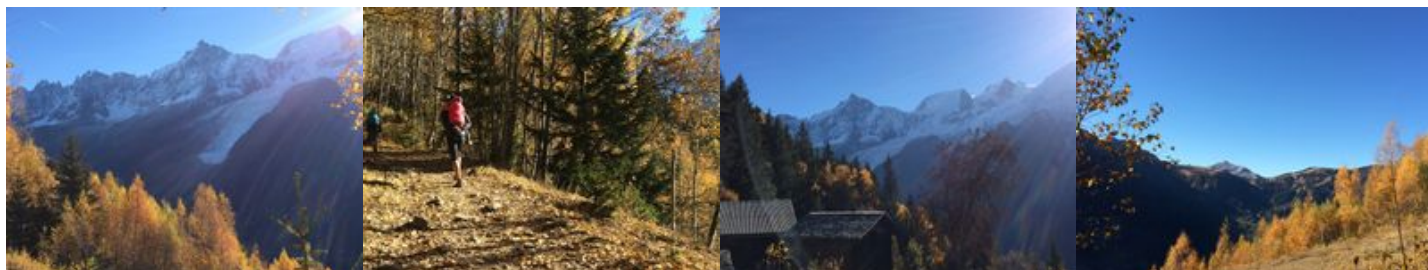
From the entrance of the park, go up to the right along the fences and take on the right during 10 mn the path of Bel-Lachat and Brévent. Leave it and go horizontally on the left for 400 m. Go down leaving the Chailloux path on the right. A few twists and turns in the slope lead to a fork: leave the Houches trail on

the left and take the one that goes horizontally to the right in the forest. It passes a little below the Lac Noir and reaches the Plan de la Cry.

Possibility to start from Les Houches, Les Bossons or Chamonix.

More information available at the Tourist Office or the High Mountain Office and in our trail guide.

Attention : The conditions of the trails are likely to change, think of informing you before leaving.



Office de Tourisme de Chamonix

85 place du triangle de l'amitié

+33450530024

<https://www.chamonix.com/>



Retrouvez ce parcours et bien d'autres
sur l'application mobile **Loopi - balades & GPS**

