

# Hike to Aiguillette des Posettes

● Average

🚶 Walk

🕒 4 h 15 min

↔️ 7.00 km

📍 **Départ** 236 Place du Tour  
74400, Chamonix-Mont-Blanc

📍 **Arrivée** 250 Chemin du Quieset  
74660, Vallorcine

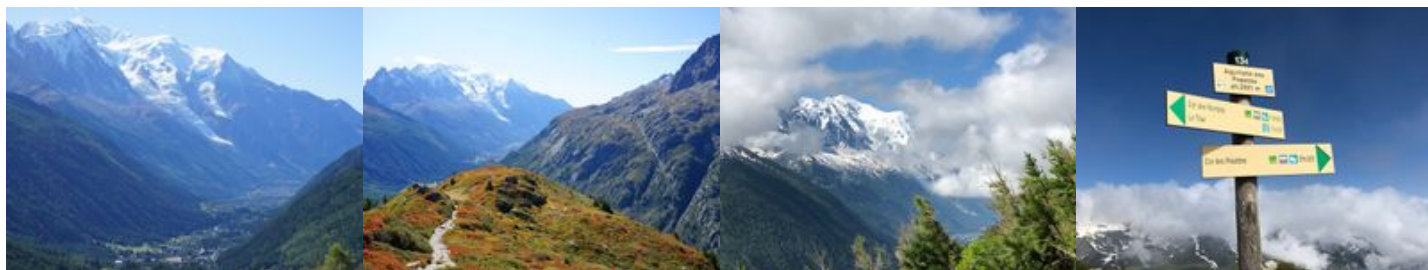


## Descriptif

Near the bridge on the right bank of the Arve, take the path facing the slope. It splits in two in two: go to the right in a small forest that quickly becomes clearer. Above the Tête de la Jorette, after many twists and turns, the path reaches the crossroads of the Pierre-Fendue (1,950 m): go up to the right, notice the paravalanches, reach the abandoned slate quarries, then the ridge that leads to the Aiguillette.

Another possible itinerary from the Col des Posettes at the arrival of the Vallorcine Télécabine. Pay attention to the opening dates!

More information available at the Tourist Office or the High Mountain Office and in our trail guide. Warning: Trail conditions are subject to change, so please check before you leave.



**Office de Tourisme de Chamonix**

85 place du triangle de l'amitié

+33450530024

<https://www.chamonix.com/>



Retrouvez ce parcours et bien d'autres  
sur l'application mobile **Loopi - balades & GPS**

